

Runway 14-32

Finch Branch

Open Space

Future Corporate Aviation Apron Area or Large Aviation Terminal Site

Future Corporate Aviation Apron Area

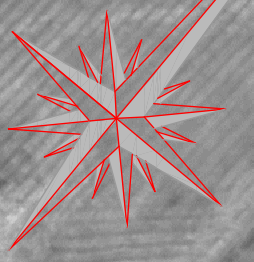
Future Corporate Aviation Apron Area

Future Terminal Area

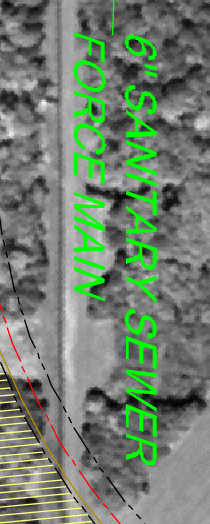
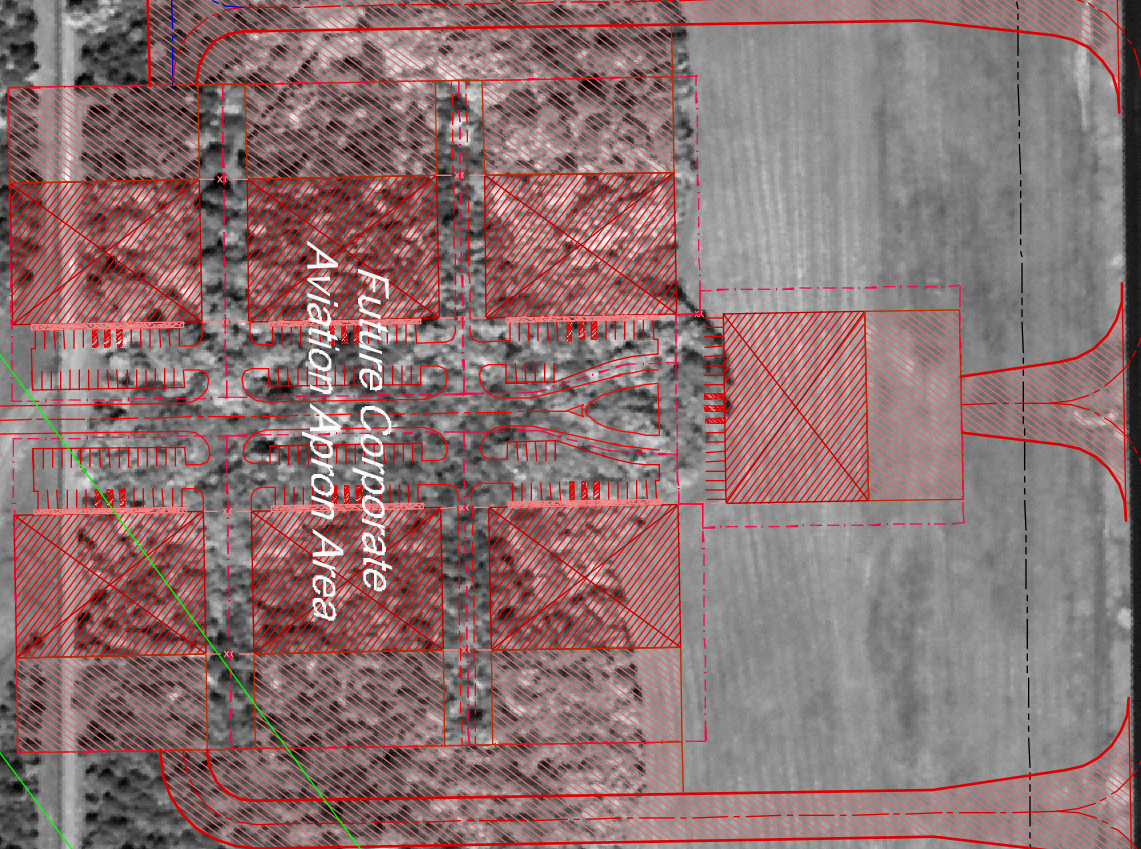
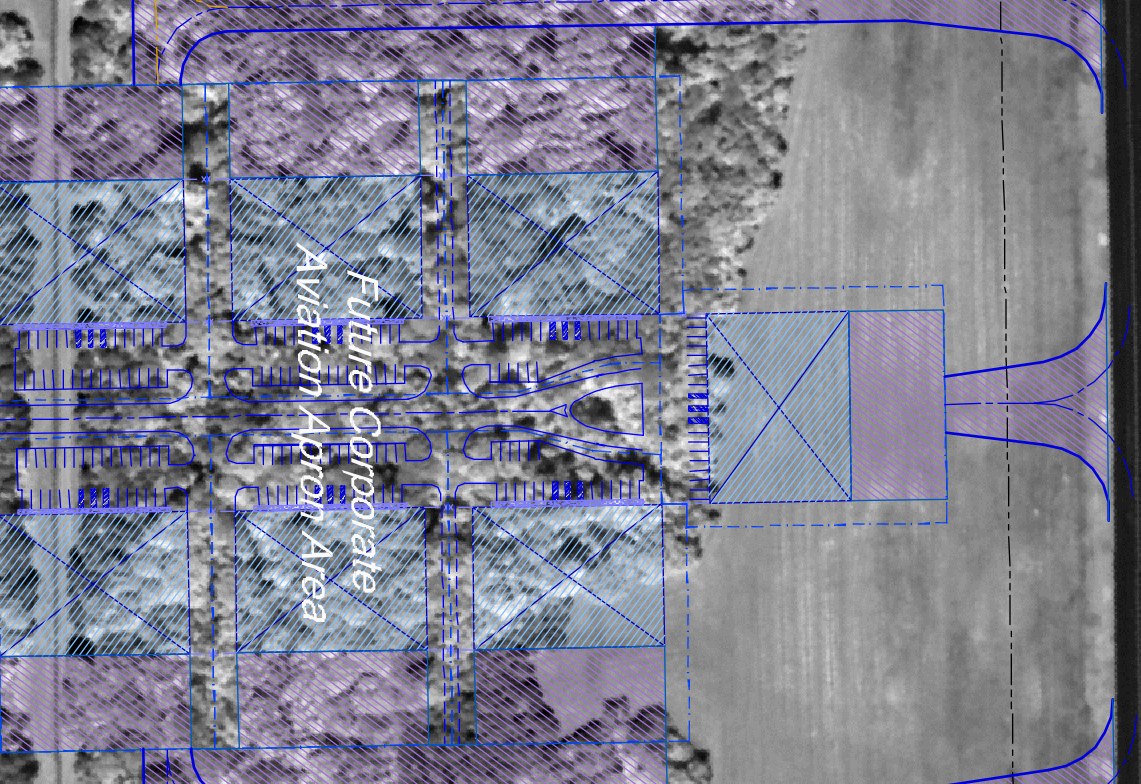
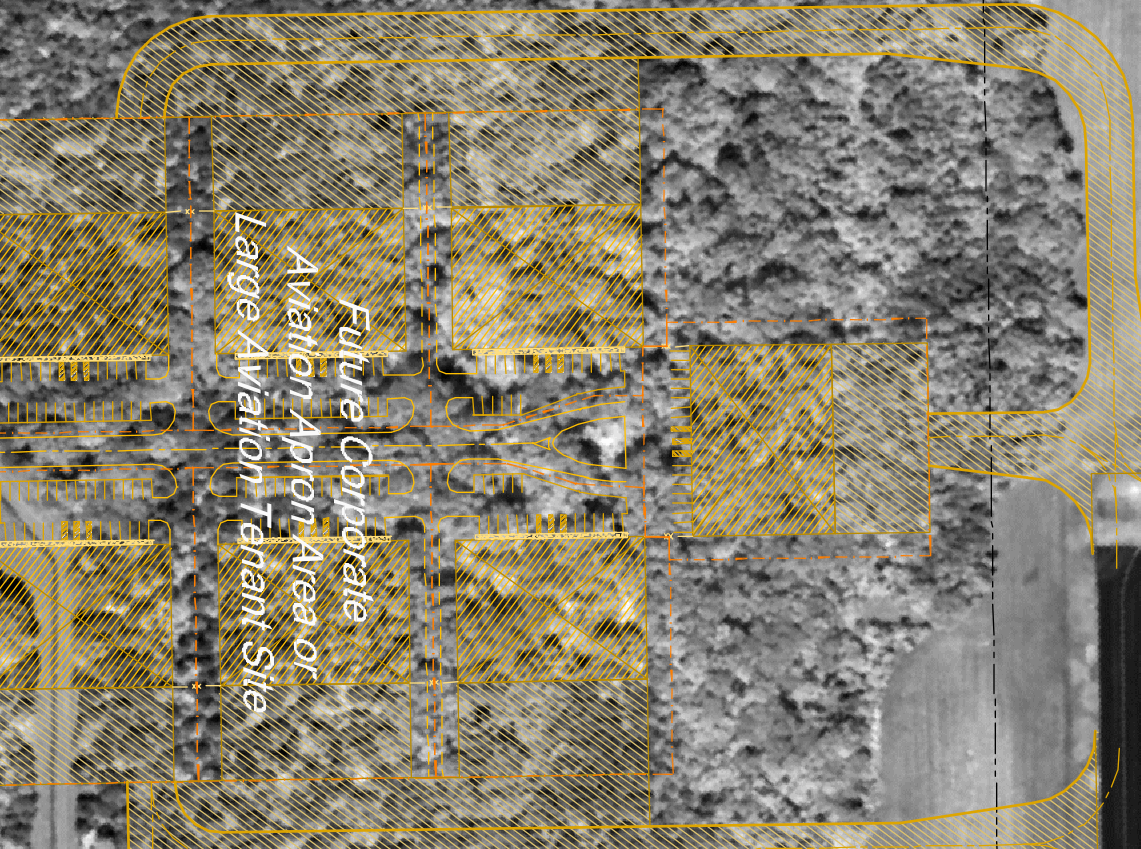
Taxiway K

Runway 19-1

Taxiway J



GRAPHIC SCALE
(in feet)



Unnamed Industrial Circle

Thunderbird Drive

Three Industrial Road

Aviation Parkway

Aviation Parkway

Three Industrial Road

Development Area Legend

- Aviation Development
- Commercial / Warehouse Development
- Commercial / Retail Development
- Industrial Development

- Gas line
- Sanitary Sewer Line
- Water Line
- Over Head Electric line



Terminal / FBO Existing Apron Area

Terminal and Business Center



Smyrna / Rutherford County Airport Authority
AIRPORT BUSINESS PARK
CONCEPT PLAN

